



*Three Piece Butt Weld Ball Valve. Full Bore. ISO 5211 Direct Mounting. PN140/100/63*

**Fig no. V-355B Full Bore**  
**1/4" ~ 4" DN8- DN 100**



**Features :**

- Investment Casting Component
- Blow out proof stem. ISO 5211 Direct mounting type
- In-line Maintenance
- For Chemical. Industrial Application
- Carbon Steel or Super Alloy upon request

**Standard Compliance :**

- Body wall thickness : EN 12516-1/2/3
- Butt Weld : B16.25
- Face to Face : MD's standard
- Body material : EN1503-1
- Pressure testing : EN 12266

**Specification :**

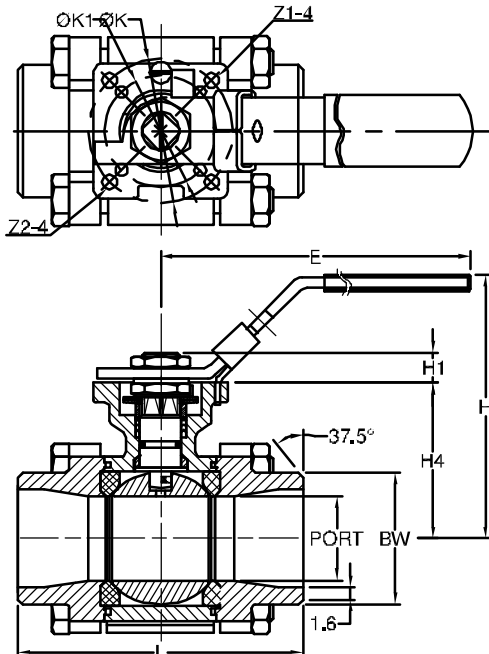
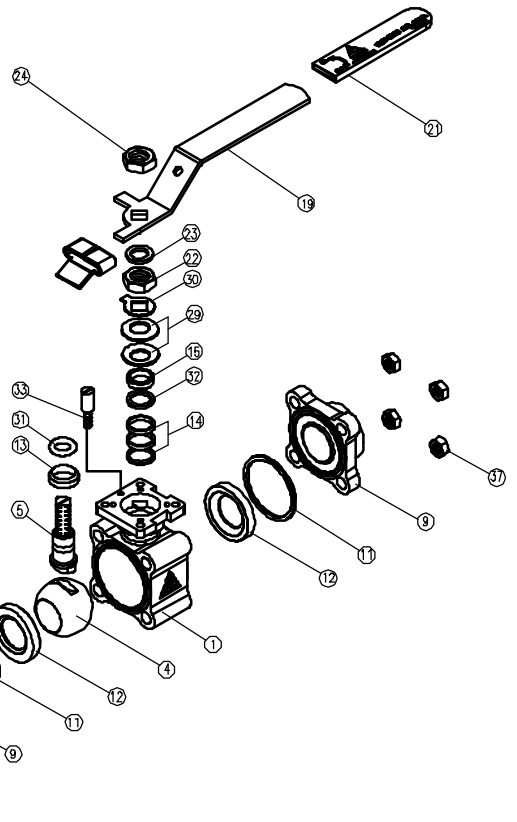
- End connection : Butt weld end
- Working Pressure : 140 bar ( CWP ) for DN 8 - 25
- 100 bar ( CWP ) for DN 32 - 50
- 63 bar ( CWP ) for DN 65 - 100
- Temperature : -20 to 180°C

**Option :**

- API 607 fire safe design

**MATERIAL LIST**

NO.	PART NAME	MATERIAL
1	BODY	1.4408/EN1503-1
4	BALL	ASTM A351 Gr.CF8M
5	STEM	SS316
9	END CAP	1.4408/EN1503-1
11	BODY SEAL	RTFE.
12	SEAT	RTFE.
13	THRUST WASHER	RTFE.
14	STEM PACKING	RTFE.
15	GLAND BUSH	SS304
19	HANDLE	SS304
21	HANDLE COVER	PLASTIC
22	STEM NUT	SS304
23	HANDLE WASHER	SS304
24	HANDLE NUT	SS304
29	BELLEVILLE WASHER	SUS304 CSP
30	TAB WASHER	SS304
31	STEM O-RING	VITON
32	PACKING FOLLOWER	PTFE.+25%GF
33	STOP PIN	SS304
35	BODY BLOT	SS304
37	BOLT NUT	SS304



**DIMENSION**

unit:mm

SIZE	PORT	L	E	H	H1	H4	C	ØK	ØK1	Z1-4	Z2-4	BW	
DN8	1/4"	11,0	62,5	112,0	72,9	8,5	37,0	9,0	50,0	36,0	7,0	6,0	13,7
DN10	3/8"	12,5	62,5	112,0	72,9	8,5	37,0	9,0	50,0	36,0	7,0	6,0	17,1
DN15	1/2"	15,0	68,1	112,0	72,9	8,5	37,0	9,0	50,0	36,0	7,0	6,0	21,3
DN20	3/4"	20,0	77,1	112,0	81,8	8,5	45,0	9,0	50,0	36,0	7,0	6,0	26,7
DN25	1"	25,0	83,6	136,0	90,5	11,4	53,5	9,0	50,0	36,0	7,0	6,0	33,4
DN32	1-1/4"	32,0	96,1	185,0	98,0	11,4	59,0	9,0	50,0	36,0	7,0	6,0	42,2
DN40	1-1/2"	38,0	107,2	197,9	114,7	14,0	74,8	14,0	70,0	50,0	9,0	7,0	48,3
DN50	2"	50,0	118,5	197,9	124,0	13,7	83,5	14,0	70,0	50,0	9,0	7,0	60,3



*Three Piece Butt Weld Ball Valve. Full Bore. ISO 5211 Direct Mounting. PN140/100/63*

**Fig no. V-355B Full Bore**  
**1/4" ~ 4" DN8- DN 100**



**Features :**

- Investment Casting Component
- Blow out proof stem. ISO 5211 Direct mounting type
- In-line Maintenance
- For Chemical. Industrial Application
- Carbon Steel or Super Alloy upon request

**Standard Compliance :**

- Body wall thickness : EN 12516-1/2/3
- Butt Weld : B16.25
- Face to Face : MD's standard
- Body material : EN1503-1
- Pressure testing : EN 12266

**Specification :**

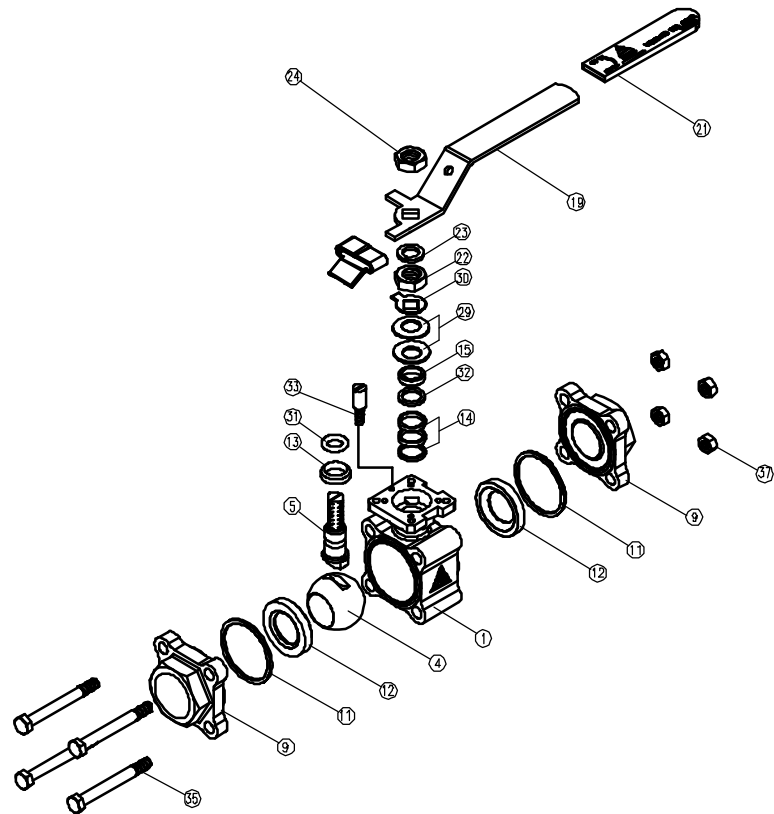
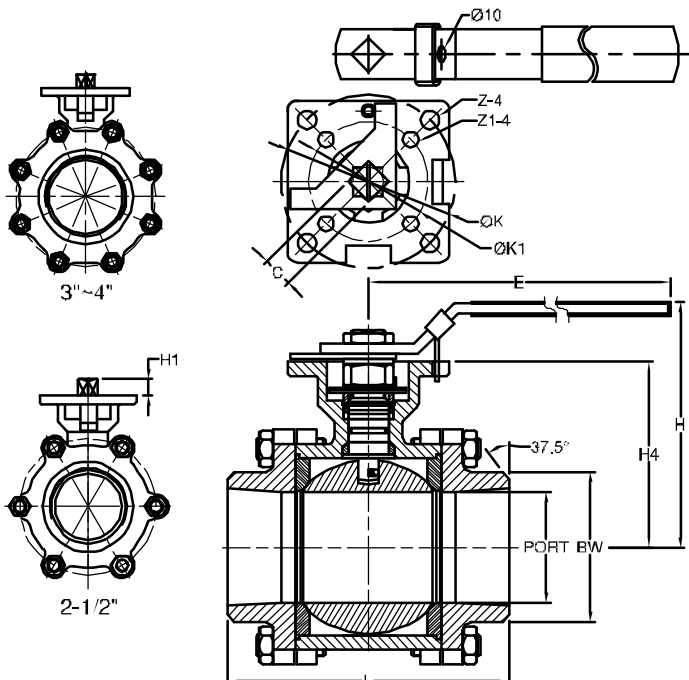
- End connection : Butt weld end
- Working Pressure : 140 bar ( CWP ) for DN 8- 25  
100 bar ( CWP ) for DN 32- 50  
63 bar ( CWP ) for DN 65- 100
- Temperature : -20 to 180°C

**Option :**

- API 607 fire safe design

**MATERIAL LIST**

NO.	PART NAME	MATERIAL
1	BODY	1.4408/EN1503-1
4	BALL	ASTM A351 Gr.CF8M
5	STEM	SS316
9	END CAP	1.4408/EN1503-1
12	SEAT	RTFE.
13	THRUST WASHER	RTFE.
14	STEM PACKING	RTFE.
15	GLAND BUSH	SS304
19	HANDLE	SS304
21	HANDLE COVER	PLASTIC
22	STEM NUT	SS304
23	HANDLE WASHER	SS304
24	HANDLE NUT	SS304
28	STOP PLATE	SS304
29	BELLEVILLE WASHER	SUS304 CSP
30	TAB WASHER	SS304
31	STEM O-RING	VITON
32	PACKING FOLLOWER	PTFE,+25%GF
33	STOP PIN	SS304
35	BODY BLOT	SS304
37	BOLT NUT	SS304



**DIMENSIONS**

SIZE	PORT	L	E	H	H1	H4	C	ØK	ØK1	Z-4	Z1-4	BW	unit:mm
DN65	2-1/2"	62.7	158.5	267.0	155.0	18.0	108.8	17.0	102.0	70.0	11.0	9.0	73.0
DN80	3"	80.0	187.2	267.0	208.5	18.0	118.3	17.0	102.0	70.0	11.0	9.0	88.9
DN105	4"	100.0	219.0	322.0	216.7	18.0	153.8	17.0	102.0	70.0	11.0	9.0	114.3