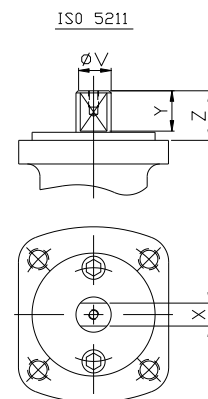
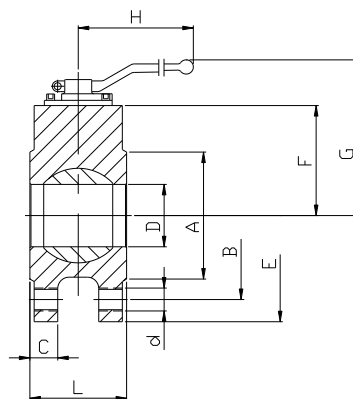
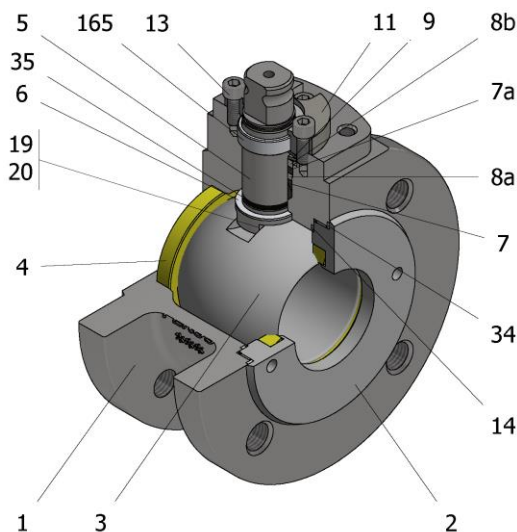


FIG.Z 96 TTTGV PN10/PN40 DN15-DN80



Position	Description	Material
01	Body 1	S.S. 1.4408
02	Body 2	S.S. 1.4401
03	Ball	S.S. 1.4408
04	Seat	PTFE (modified)
05	Stem	S.S. 1.4401
06	Stem seal	PTFE (modified)+FG
07	Stem packing	PTFE (modified)
07a	Stem packing 2	Graphite
08a	Gland packing 1	S.S. 1.4401
08b	Gland packing 2	S.S. 1.4401
09	Spring washer	S.S. 1.4310
11	Cover	S.S. 1.4408
13	Cover bolt	A4-70
14	Body seal 1	PTFE (modified)
16	Handle	WCB
17	Handle bolt	1.045(8.8)
19	Spring	S.S. 1.4401
20	Antistatic ball	S.S. 1.4401
34	Body seal 2	Graphite
35	O ring stem	FKM
50	Subjection ring	S.S. 1.4021
165	Stem guide seal	PTFE (modified)+FG

General features

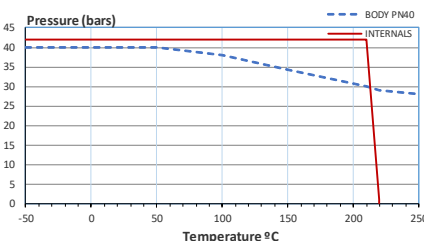
- Floating ball.
- End entry.
- Full bore.
- Soft seat.
- Bidirectional.
- Anti Blow out proof stem.
- Autoadjustable packing.
- Anti static device.
- Self-cavity pressure relief.
- Fire Safe Design
- Short measure

Standards

- Top flange ISO 5211
- Flanges EN 1092-01
- Testing EN-12266, ISO 5208
- Design EN-12516, ISO 17292, DIN 28140
- Face to face EN 558 serie 100

Official approvals

- CERTIFICATE FIRE SAFE TA-LUFT VDI 2440
- ISO 15848-1
- ATEX 2014/34/EU
- PED 2014/68/EU
- SIL 3 CAPABLE



PEKOS GROUP CERTIFICATES:

ISO 9001: 2015 / 2014/68/EU /API-6D



DIMENSIONS & Technical information

DN	PN	D	L	E	A	B	C	F	H	G	V	X	Y	Z	n x d	ISO 5211	Torque	MAST	Weight
15	40	15	35	102	45	65	-	44,5	185	104	14	11	11	14	4 x M12	F03	12	95	2
20	40	20	39	105	60	75	-	53	185	113	14	11	11	14	4 x M12	F03	14	95	2
25	40	25	44	115	68	85	18	56	185	116	14	11	11	14	4 x M12	F05/1	18	95	3
32	40	32	52	142	76	100	18	64	185	123	18	14	17	20	4 x M16	F05/2	30	95	5
40	40	40	64	150	88	110	18	75	293	139	22	17	20	30	4 x M16	F07	40	250	6
50	40	50	83	165	102	125	20	83	293	147	22	17	20	30	4 x M16	F07	65	250	7
65	40	65	105	185	122	145	22	95	293	159	22	17	20	30	8 x M16	F07	85	250	10
80	40	80	121	200	138	160	24	112	450	198	28	22	22	40	8 x M16	F10	130	522	14

** Depending on service conditions.

* Dimensions are in mm.

* Torque & MAST are in Nm.

* Weight is in Kilograms

* Torque values have been measured ΔP at maximum rating at room temperature