

**Fig No: NV-0060 1/8"~ 1"**  
**DN6 ~ DN25**



**Features :**

Provide Bubble – Tight Shut Off of Liquids or Gases  
 Primarily to Closely Regulates Fine Flow  
 Metal to Metal Design for a Bubble Tight Seal  
 Teflon Back – Up Ring Stem Seals

**Standard Compliance :**

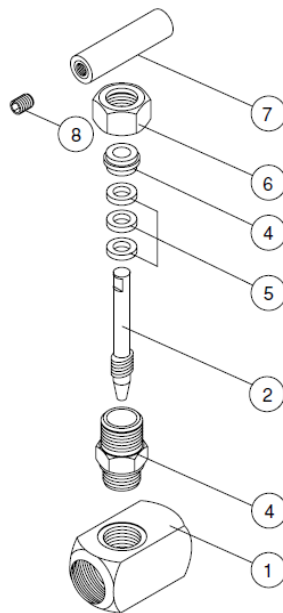
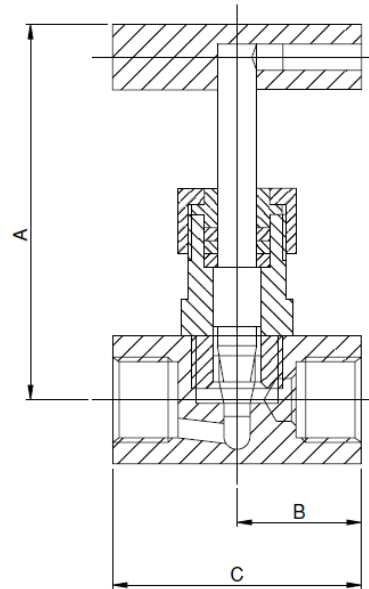
ASTM ASME B16.34 API 598  
 BS 21(BSPT) ISO 7-1 ISO 228-1 BS 21(BSPP) DIN 2999  
 ANSI B1.20.1(NPT)

**Specifications:**

Design According to ANSI B16.34  
 End Connection : Threaded End  
 Working Pressure : 6000 psi ( CWP )  
 Temperature Range : - 4 to 356 °F / - 20 to 180 °C  
 Pressure Test According to API 598 or EN 12266

**MATERIAL LIST**

NO	PARTS NAME	MATERIAL
1	BODY	A351 Gr. CF8M
2	STEM	SS316
3	BONNET	A351 Gr. CF8M
4	GLAND BUSH	SS304
5	STEM PACKING	PTFE
6	GLAND NUT	SS304
7	T BAR	SS 410
8	SET SCREW	SS304



**DIMENSIONS**

unit: mm

SIZE	A	B	C
DN6 1/8"	75.0	29.0	58.0
DN8 1/4"	75.0	29.0	58.0
DN10 3/8"	75.0	29.0	58.0
DN15 1/2"	87.0	32.5	65.0
DN20 3/4"	90.0	35.0	70.0
DN25 1"	103.0	40.0	80.0