

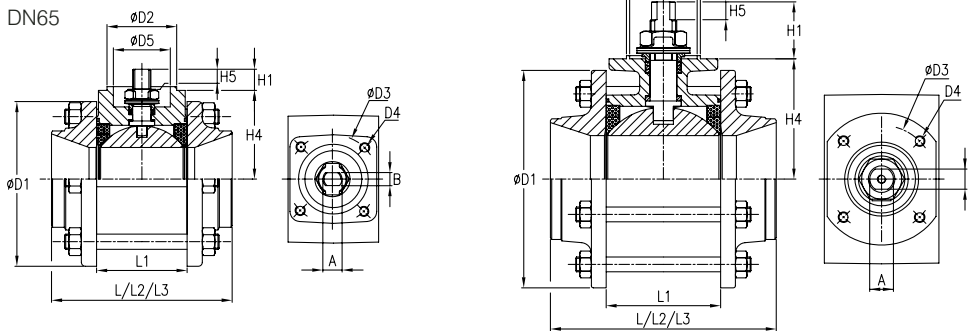
Series RA

3 Piece ball valves with ISO top flange DN65 - DN250
Butt weld, threaded, socket weld and flanged version

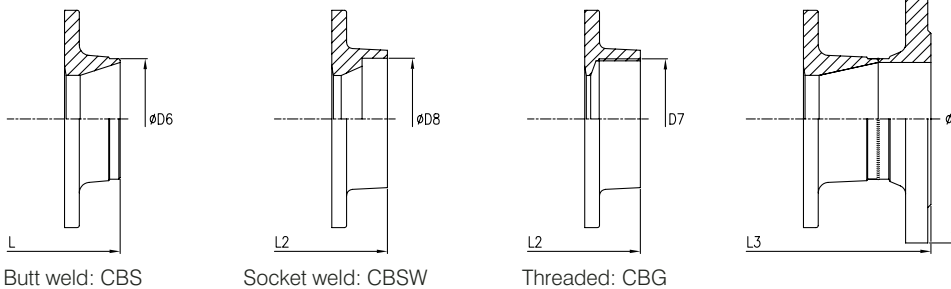


RA 66 CBF DN100

DN80 - DN250



Available end connection options:



Flanged: CBF
(Cast versions available on request)

Approvals and certificates

- TA-Luft according VDI 2440
- ATEX: 94/9/CE, group-category II 2 G D
- CE marking: Module H, category III
- Fire tested according BS 6755
- Lloyds register type approval
- DIN-GOST on request
- TÜV.AGG and TÜV.AR type approval



- PED module H, category 3
- TPED module H, category 2
- ATEX: II2G/D EEx c



Dimensions in mm

DN	ISO	L	L1	L2	L3	H1	H4	H5	øD	øD1	øD2	øD3	D4	øD5	øD6	D7	øD8	A	B	Ball bore	Weight in Kg		
																					CBS	CBSW	CBF CBG
65	F07	142.6	71.4	160	290	16	70	16	185	143	55	70	M8	45	76.1	2 1/2"	77	14.3	8.9	50	6.6	6.8	16
80	F07	169.5	88.9	180	310	54	99	17	200	165	55	70	M8	45	88.9	3"	90	22.5	19	62	12.6	13	26
100	F10	214	108.5	214	350	54	114	17	220	206	70	102	M10	64	114.3	4"	115.5	22.5	19	82.4	23	23	34
125	F10	277	134.6	-	400	54	128	17	250	234	70	102	M10	64	139.7	-	-	22.5	19	100	37	-	47
150	F10	307	134.6	-	480	54	128	17	285	234	70	102	M10	64	168.3	-	-	22.5	19	100	40	-	56
200	F12	409	189.1	-	600	72	186	28	340	345	85	125	M12	65	219.1	-	-	35	28.5	150	84	-	133
250	F14	460	248	-	730	77	228	28	405	428	100	140	M16	-	273	-	-	38	30	200	150	-	200

Notes

- All dimensions are related to reduced bore valves. For full bore valves please apply the dimensions of the next diameter (except L3 which is identical in both instances)